

Load holding - lowering valves

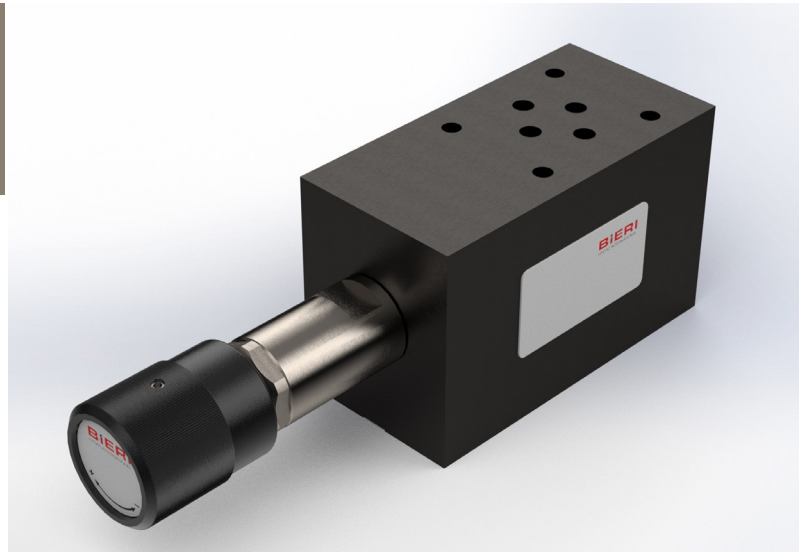
Type SBV700

NG 6 ISO

up to 25 l/min, up to **700 bar**

Features

- Direct operated
- Poppet tight
- Pilot pressure adjustable up to max. 350 bar
- Low tendency for vibration due to function independent from load



Applications

For load holding and controlled lowering of loads with double acting cylinders. Protection against uncontrolled and improper movement in direction of load. Consistent travelling speed of the consumer regardless of the load.

Design

- Seated valves in modular plate design

Technical data

Hydraulic fluid	Mineral oil according to DIN 51524 (other fluids on request)	
Fluid temperature range	-20 to 80 °C	
Ambient temperature range	-30 to 50 °C	
Viscosity range	5 to 400 mm ² /s	
Porting	NG 6 according to DIN 24340 / ISO 4401 / CETOP RP 121 H	
Max. operating pressure connection P, A, B	700 bar	
Max. operating pressure connection T	350 bar	
Max. flow rate	25 l/min	
Pilot pressure adjustable	50 bar up to 350 bar	
Filtration (recommendation)	According to NAS 1638, class 6 resp. ISO/DIN 4406 17/15/12	
Weight	2,3 kg	
Material	Housing:	steel, galvanized, chromated
	Cartridge:	steel corrosion resistant
	Adjusting knob:	plastic

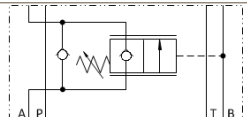
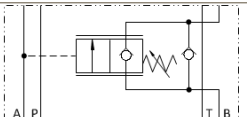
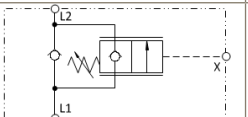
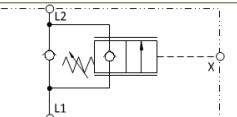
Type SBV700

NG 6 ISO
up to 25 l/min, up to 700 bar

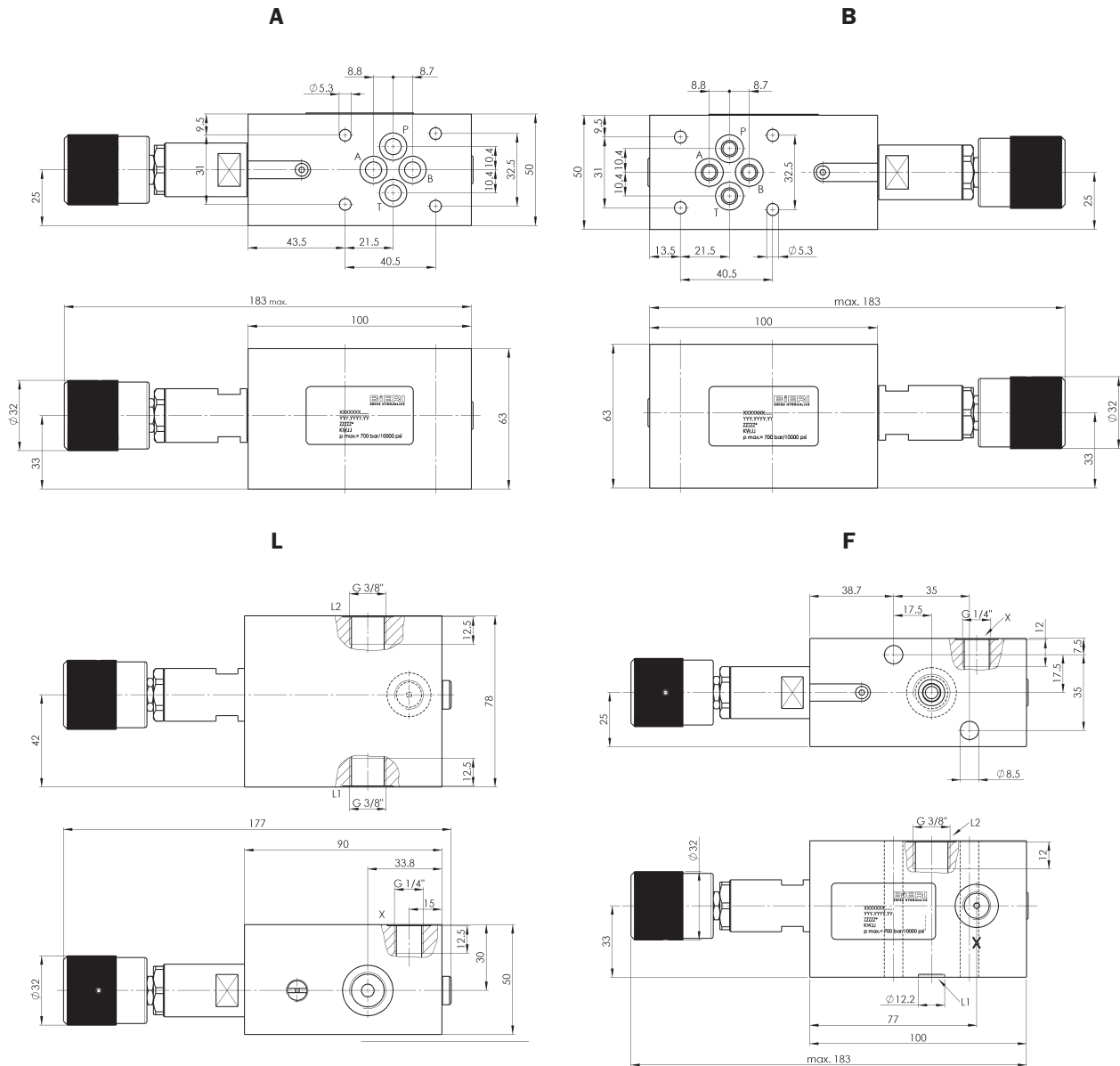
Type code

Example	SBV	700	-	6	-	A	-	350	-	V	-	A		00
Load holding - lowering valves														
Type	700 bar													
Nominal Size	6													
Design	<p>A CETOP, connection A closed, operated by connection B</p> <p>B CETOP, connection B closed, operated by connection A</p> <p>L for in-line mounting</p> <p>F cylinder mounting</p>													
Pilot pressure	<p>350 max. adjustable pilot pressure (50 - 350 bar)</p>													
Seal material	<p>V FKM</p> <p>other seal materials on request</p>													
														<p>Design 00 ... 99 For internal purposes</p>
														<p>Index Please leave blank For internal purposes</p>
														<p>Design revision For internal purposes</p>

Product information

Design	A	B	L	F
Type code	SBV700-6-A-350-V-A*00	SBV700-6-B-350-V-A*00	SBV700-6-L-350-V-A*00	SBV700-6-F-350-V-A*00
Part No.	3686771	3687582	4052347	4052346
Symbol				

Dimensional drawings



Scope of delivery

For each valve the following is included:
 4 pcs. O-rings 9,25 x 1,78 mm, 90° ShA
 1 adjusting knob mounted
 1 cap in addition

Other mounting screws, tie bolts and subplates see technical data sheet AP700/RP700/EP700.

Bieri Hydraulik AG

Könizstrasse 274
 CH-3097 Liebefeld
 Tel. +41 31 970 09 09 | Fax +41 31 970 09 10
 info@bierihydraulics.com | www.bierihydraulics.com

The information in this brochure relates to the operating conditions and applications described.

For applications and operating conditions not described, please contact the relevant technical department.

Subject to technical modifications.