

Unloading valves

Type DA700

NG 6 ISO

up to 25 l/min, up to 700 bar



Features

- Directly operated
- Poppet tight
- Good corrosion resistance
- High operational safety and reliable switching
- High duty cycles and long lifetime
- Fine pressure adjustment over the entire pressure range
- Switch-off pressure up to max. 350 bar can be limited by lock nuts

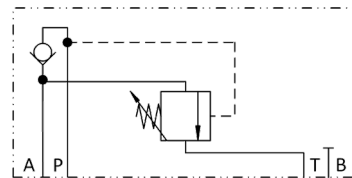
Applications

The unloading valve is used with a low pressure (LP) and a high pressure pump (HP) in a dual-pressure-system. They both supply the same working port. The valve unloads the low pressure pump flow at a set pressure to the tank.

Before the switchover both pumps supply the working port. After the switch over the low pressure pump flow is connected loss-free to the tank. The working port is supplied by the high pressure pump only.

Design

- A Connection for low-pressure pump
- P Connection for high-pressure pumps
- T Tank connection
- The unloading valve is designed as final valve of vertical valve stacks.



Technical data

Hydraulic fluid	mineral oil according to DIN 51524 (other fluids on request)	
Fluid temperature range	- 20 to 80 °C	
Ambient temperature range	- 30 to 50 °C	
Viscosity range	5 to 400 mm ² /s	
Porting	NG 6 according to DIN 24340 / ISO 4401 / CETOP RP 121 H	
Max. operating pressure connection P	700 bar	
Max. operating pressure connection A, T	350 bar	
Max. flow rate	25 l/min	
Pilot pressure adjustable	25 bar up to 350 bar	
Filtration (recommendation)	according to NAS 1638, class 6 resp. ISO/DIN 4406 17/15/12	
Weight	2.1 kg	
Material	valve body:	steel, galvanized, chromated
	cartridge body:	steel corrosion resistant
	adjusting knob:	plastic

Type DA700

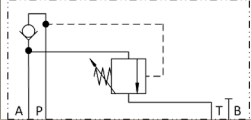
NG 6 ISO
up to 25 l/min, up to 700 bar

Type code

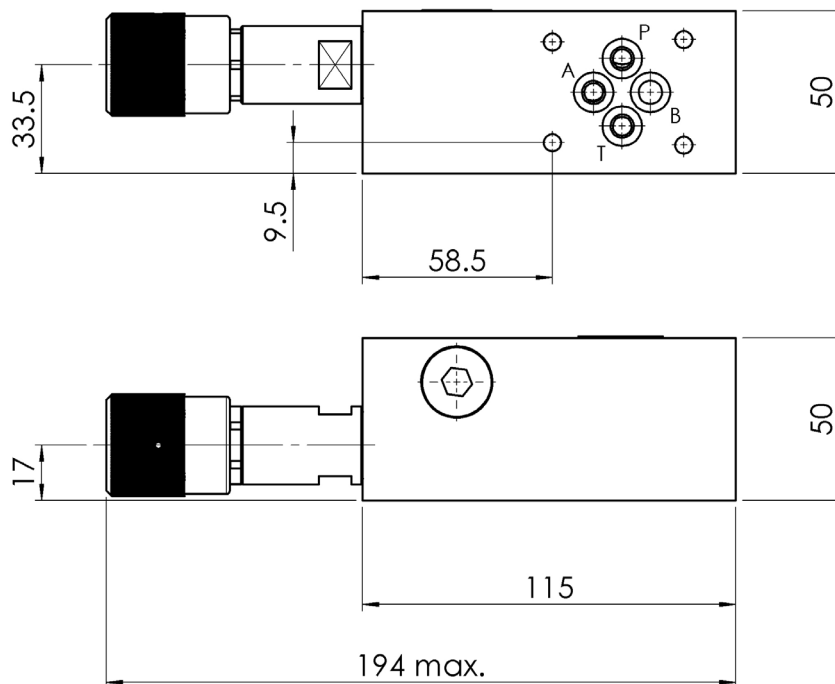
Example	DA	700	-	6	-	A	-	350	-	V	-	A		00
Unloading valves														
Size		700 bar												
Nominal Size				6										
Low pressure port						A (connection for low-pressure pump)								
Max. shut-off pressure								350 bar						
Seal material										V	FKM			
														other seal materials on request

Design 00 ... 99 For internal purposes
Index Please leave blank For internal purposes
Design revision For internal purposes

Product information

Low pressure port	A
Type code	DA700-6-A-350-V-*00
Part No.	3682115
Symbol	

Dimensional drawings



Scope of delivery

For each valve the following is included:
 4 pieces O-rings 9,25 x 1,78 mm, FKM, 90°ShA
 1 Adjusting knob mounted
 1 Cap in addition

Accessories

Tie bolts / fixing screws and subplates
 see technical data sheet AP / RP